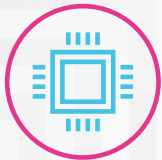


# Lenovo™ Chromebook S345-14

## DO MORE. ENJOY MORE!

Fast, flexible, and fun, the Lenovo Chromebook S345-14 brings everyone's favorite Chromebook features, housed in a slim 180° hinged chassis, running on the lightning-fast Chrome OS that boots up in seconds, updates automatically, and is protected by built-in virus protection. Powered with 7<sup>th</sup> Generation AMD A6-9220 APU with Radeon™ R4 Graphics and runs up to 10 hours battery life, it'll seamlessly run all of your favorite apps at the same time.

### WHY YOU SHOULD BUY THE LENOVO CHROMEBOOK S345-14



#### Focus on what is important

Faster, simpler, and more secure, the Lenovo Chromebook S345-14 is powered by 7<sup>th</sup> Generation AMD A6-9220 APU with Radeon™ R4 Graphics delivers excellent photo and video management capabilities for your everyday needs. You can enjoy the streamlined interface of Chrome OS, bringing the latest Chromebook features to your fingertips—including millions of apps on Google Play, custom Google Map wallpapers and images, and more. It's designed with a full backlit keyboard and spacious trackpad with a key travel distance of 1.4 mm for an optimal typing experience. With up to 10 hours battery, you can bring this Chromebook device with you anywhere, anytime.



Lenovo™



#### For looking at the bigger picture

Thanks to the narrow bezel and FHD IPS display, you can enjoy all your favorite movies and videos with less distraction. Also, the touchscreen makes for a more intuitive experience, giving you the ability to click or drag files right on the screen. It also packs crystal-clear audio with dual 2W stereo speakers. This means you can enjoy your favorite music and videos at maximum volume and get the party started!



#### Get hooked up

Lenovo Chromebook S345-14 features two USB 3.1 Type-C™ Gen1 ports, two USB 3.1 Type-A Gen1 ports and one audio jack. With the USB 3.1 Type-C™ Gen1 port, you can enjoy fast data transfer, multimedia streaming, and battery charging on a single port! There's also built-in 802.11 ac WiFi and Bluetooth® 4.2 for stronger, more stable connections and faster data transferring speed.



#### Stay productive with Chrome OS

No setup needed—just login with your Google account to experience a new type of convertible laptop for everything you love to do. Lenovo Chromebook S345-14 is easy to use, offers built-in virus protection, and keeps going with a long-lasting battery. Stay synced with your Android™ phones & tablets, and everywhere you're signed in with your Google account, so your stuff stays with you even when your laptop doesn't—all while keeping email, maps, docs, and pics safely stored either locally or in the cloud.

\* Best results occur where a reliable internet connection exists.



WWW.LENOVO.COM



# Lenovo™ Chromebook S345-14

## SPECIFICATIONS

### PERFORMANCE

#### Processor

7<sup>th</sup> Generation AMD A6-9220 APU with Radeon™ R5 Graphics  
7<sup>th</sup> Generation AMD A4-9120 APU with Radeon™ R4 Graphics

#### Operating System

Chrome OS

#### Camera

720p

#### Memory

Up to 8 GB DDR4

#### Storage

eMMC : Up to 64 GB

#### Audio

2 x 2W Stereo Speakers

#### Battery

Up to 10 Hours

### DESIGN

#### Display

Up to 14" FHD (1920 x 1080)  
IPS Touchscreen

#### Dimensions (W x D x H)

(mm) : 328 x 225 x 17.7  
(inches) : 12.91" x 8.85" x 0.69"

#### Net Weight

Starting at 3.27 lbs (1.48 kg)

#### Colors

Mineral Grey  
Platinum Grey

### CONNECTIVITY

#### WLAN & Bluetooth®

2 x 2 WiFi 802.11 ac  
Bluetooth® 4.1 Combo with WiFi Card

#### Input/Output (I/O) Ports

2 x USB 3.1 Type-C™ Gen 1<sup>1</sup>  
2 x USB 3.1 Type-A Gen 1<sup>1</sup>  
1 x microSD™ Card Reader  
1 x Audio Combo Jack

\* Internet connection required for auto updates.

\* Google Play is a trademark of Google LLC.

\* Battery life based on testing with PLT (power load test).  
Battery life varies significantly with settings, usage, and other factors.

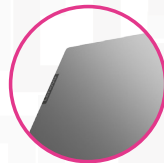
\* Best results occur where a reliable internet connection exists.

\* ©2019 GRAFCAN.

<sup>1</sup> The actual transfer speed of the USB 3.1 Gen 1 will vary and, depending on many factors, such as the processing capability of host and peripheral devices, file attributes and other factors related to system configuration and your operating environments, will be slower than a speed of 5 Gbit/s.



MINERAL GREY



PLATINUM GREY



## LENOVO SERVICES

### Warranty Upgrades - On-site /

#### In-Home Service

Maximizes PC uptime and productivity by providing convenient, fast repair services in your own home.

#### Accidental Damage Protection

Avoid the hassles of unexpected repair costs. Provides coverage for non-warranted damage incurred under normal operating conditions, such as minor spills, drops or damage to the integrated screen.

### Warranty Extensions

#### (1-to-3 Years Total Duration)

This fixed-term, fixed-cost service helps accurately budget for PC expenses, protect your valuable investment and potentially lower the cost of ownership over time.

## OPTIONS & ACCESSORIES



Lenovo 520  
Wireless Mouse



Lenovo 100  
In-Ear Headphone



Lenovo 15.6" Laptop  
Casual Backpack B210



WWW.LENOVO.COM

Lenovo reserves the right to alter product offerings and specifications at any time, without notice. Lenovo makes every effort to ensure accuracy of all information but is not liable or responsible for any editorial, photographic or typographic errors. All images are for illustration purposes only. For full Lenovo product, service and warranty specifications visit [www.lenovo.com](http://www.lenovo.com). Lenovo makes no representations or warranties regarding third party products or services. **Trademarks:** The following are trademarks or registered trademarks of Lenovo: Lenovo, the Lenovo logo, IdeaPad, IdeaCentre, yoga and yoga home. Microsoft, Windows and Vista are registered trademarks of Microsoft Corporation. Ultrabook, Celeron, Celeron Inside, Core Inside, Intel, Intel Logo, Intel Atom, Intel Atom Inside, Intel Core, Intel Inside, Intel Inside Logo, Intel vPro, Itanium, Itanium Inside, Pentium, Pentium Inside, vPro Inside, Xeon, Xeon Phi, and Xeon Inside are trademarks of Intel Corporation in the U.S. and/or other countries. Android and Google Play are trademarks of Google LLC. Other company, product and service names may be trademarks or service marks of others. Visit [www.lenovo.com/lenovo/us/en/safecomp/](http://www.lenovo.com/lenovo/us/en/safecomp/) periodically for the latest information on safe and effective computing. ©2019 Lenovo. All rights reserved.



Lenovo™