



**We love that you are rocking JLab!
We take pride in our products and fully stand behind them.**

JLAB
|
JBUDS AIR SPORT
|
EARBUDS



YOUR WARRANTY

All warranty claims are subject to JLab authorization and at our sole discretion. Retain your proof of purchase to ensure warranty coverage.



CONTACT US

Reach out to us at support@jlab.com or visit jlab.com/contact

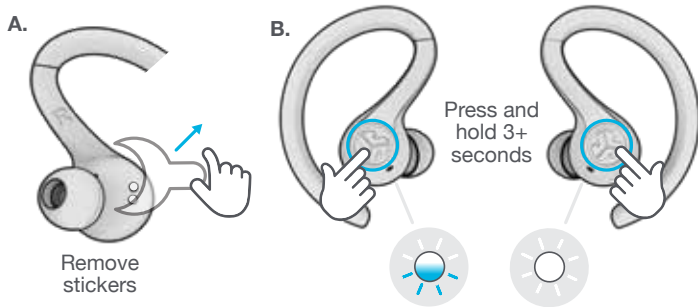
REGISTER TODAY

jlab.com/register

**Product updates | How-to tips
FAQs & more**

FIRST TIME SETUP

- 1 AUTO-CONNECTING EARBUDS**
A. Take earbuds out of the charging case and remove stickers.
B. Press and hold both touch sensors 3+ seconds to turn ON. One earbud turns **solid white** and the other earbud **blinks blue/white** indicating ready to pair to your device.



- 2 CONNECTING TO BLUETOOTH**
 Select "JLab JBuds Air Sport" in your device settings. Voice prompt "Bluetooth connected" followed by **solid white lights** will indicate you are connected.

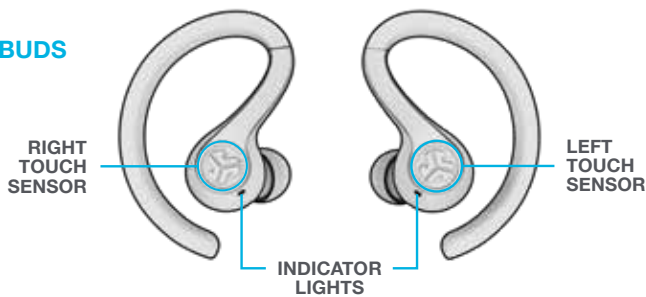


ADDING NEW / ADDITIONAL BLUETOOTH DEVICES:

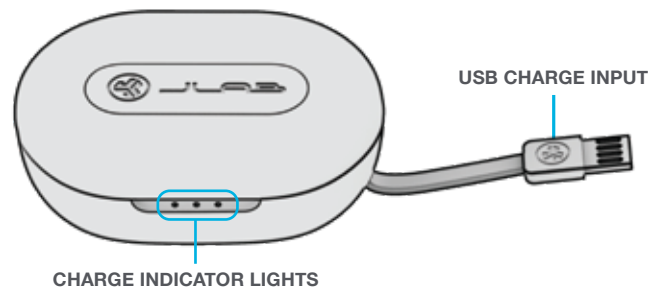
Turn OFF Bluetooth from any previously connected device. **Turn ON Bluetooth** from new device. Take earbuds out of the case. Earbuds will automatically enter Bluetooth Pairing. Select "JLab JBuds Air Sport" in device settings to connect.

IN THE BOX

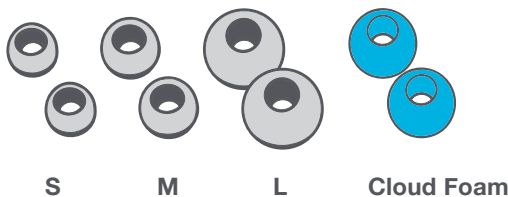
EARBUDS



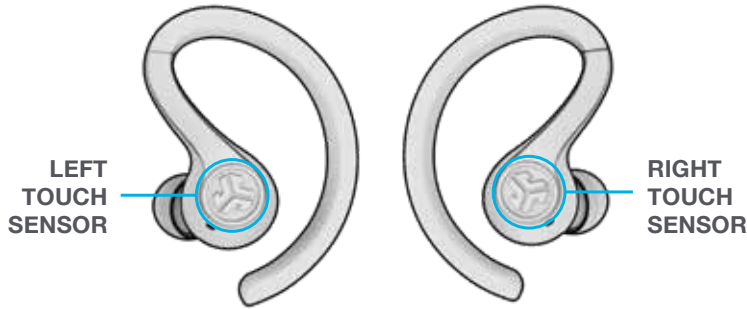
CHARGING CASE



EARTIPS



BUTTON FUNCTIONS



VOLUME DOWN: Single tap
SIRI (iOS) or "OK GOOGLE" (ANDROID): Double tap
SWITCH MUSIC / MOVIE MODE: Press & hold 1+ sec
EQ CHANGE: Triple tap (Cycles through 3 EQ settings)
POWER ON: Press & hold 3+ sec

VOLUME UP: Single tap
PLAY / PAUSE: Double tap
TRACK FORWARD: Press & hold 1+ sec
ANSWER: Single tap
HANG UP: Double tap
REJECT INCOMING CALLS: Press & hold 1+ sec
BE AWARE ON / OFF: Triple tap
POWER ON: Press & hold 3+ sec

VOICE PROMPTS

"JLab ON": Power ON
"Ready to Pair": JBuds Air Sport are ready to pair to Bluetooth device
"Bluetooth Connected": Earbud is connected to device
"Battery Full": 100-80%
"Battery Medium": 80-20%
"Low Battery": Less than 20%
When power decreases to 10%, "Low Battery" will play
"Goodbye": Power OFF

TURN OFF EARBUDS WITHOUT CHARGING CASE:

Enter your Bluetooth device settings and disconnect the JBuds Air Sport. Earbuds will power OFF after 3 minutes.

EQUALIZER MODES

Triple tap left earbud for different EQ settings. Voice prompts will indicate EQ settings (JBuds Air Sport will cycle 3 EQ settings)



JLab SIGNATURE
JLab C3™ signature sound with amplified bass and vocals



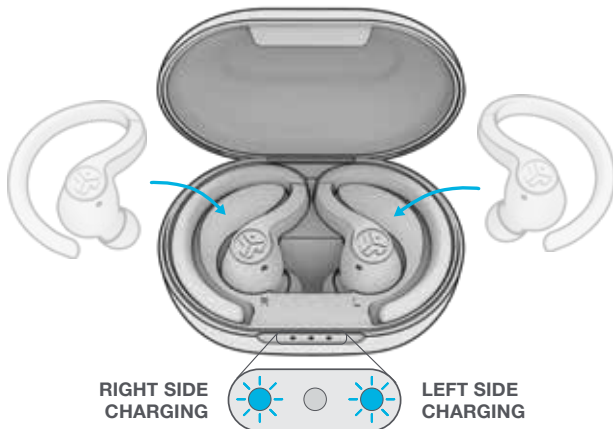
BALANCED
Even sound with no additional enhancements



BASS BOOST
Amplified bass and sub-bass

CHARGING EARBUDS

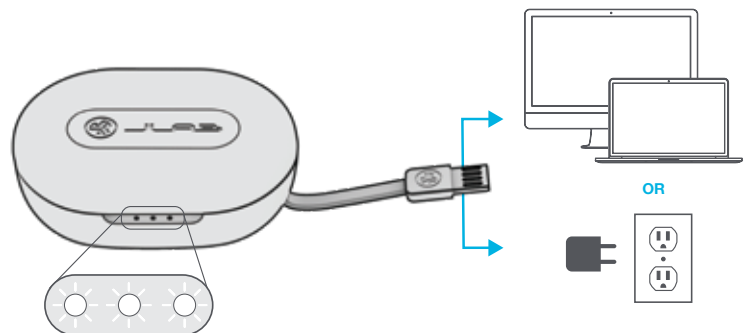
- 1 Placing the earbuds in the charging case will power off earbuds and start charging. **Blue lights** indicate earbuds are charging and will turn off when fully charged.



- 2 When earbuds are taken out of the case, they will auto power on and reconnect to your device.

CHARGING CASE

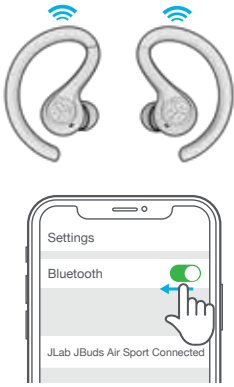
Connect the JBuds Air Sport to computer or USB 5V 1A (or less) output device.



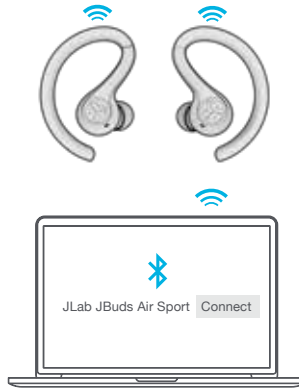
Lights **pulse white** when charging and **turn solid white** when fully charged.

MULTIPOINT (connect 2 devices simultaneously)

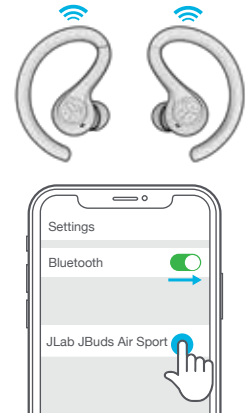
- 1 Once **FIRST** device is connected, turn off Bluetooth in device settings. JBuds Air Sport will auto enter Bluetooth Pairing.



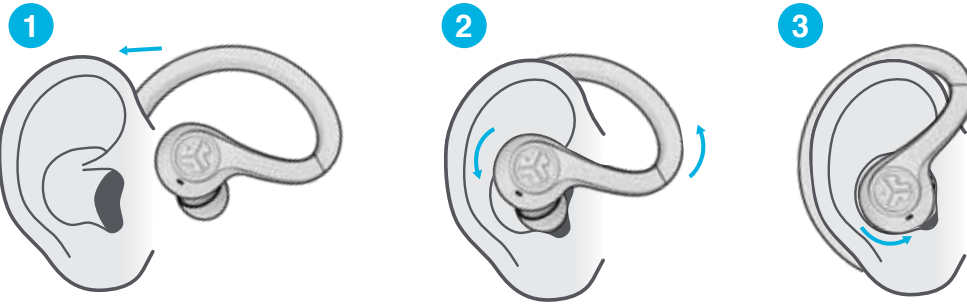
- 2 Enter your **SECOND** device Bluetooth settings and connect to JBuds Air Sport.



- 3 Enter your **FIRST** device Bluetooth settings. Turn on Bluetooth and connect to JLab JBuds Air Sport.



FITTING



FIND YOUR EARBUDS

Download the Tile app and activate to find your earbuds.
Learn more at jlab.com/tileapp

Activating Tile will reduce earbud playtime.



DOWNLOAD THE APP

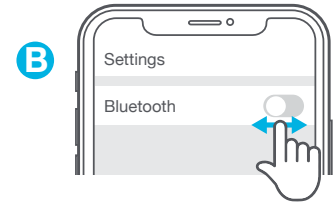
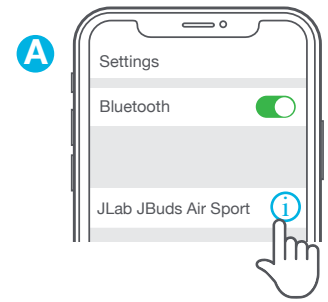
Customize JBuds Air Sport features and update the latest software.
Download the JLab Sound App in Apple/Google Play Store.



TROUBLESHOOTING

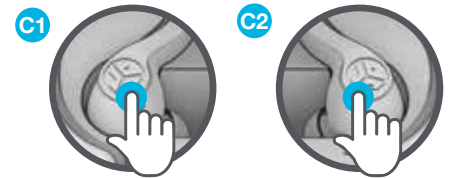
NO AUDIO IN LEFT EARBUD OR EARBUDS DISCONNECT FROM EACH OTHER (MANUAL RESET)

- 1 Enter your Bluetooth device settings and forget the JBuds Air Sport. Fig **A**
- 2 Open the charging case door and leave both earbuds inside. Starting with **ONE** earbud, **quickly tap the touch sensor 7x times**. Light will **blink blue 4x times**. Leave the earbuds in the charging case. Fig **C1**
- 3 Repeat with the other earbud. **Quickly tap the touch sensor 7x times**. Light will **blink blue 4x times**. Fig **C2**
- 4 Take both earbuds out of the charging case and keep them within 2 inches from each other. Wait for one earbud to turn **solid white** and the other to **blink blue/white**. You are now ready to pair to your Bluetooth device.



BLUETOOTH DEVICE DOES NOT CONNECT/RECONNECT

- 1 Enter your Bluetooth device settings and forget the JBuds Air Sport. Fig **A**
- 2 Turn OFF then ON Bluetooth. Fig **B**
- 3 Take the earbuds out of the case. Wait for one to turn **solid white** and the other to **blink blue/white**.
- 4 Select "JLab JBuds Air Sport" in device settings to reconnect.



Instructional videos at: [JLAB.COM/MANUALS](https://www.jlab.com/manuals)

QUICK TIPS

- The left or right earbud can be used independently for music and phone calls. Simply choose one and take out of the case to connect.
- Choosing the correct ear tip makes a significant improvement in audio quality due to the proper seal for the driver. Test all ear tips for best results.
- Only **ONE** Bluetooth device can be connected at a time. Turn off Bluetooth on unwanted devices and turn on Bluetooth on chosen device to connect.

WARNING

Fully dry off the earbuds before placing in the charging case.

If the earbuds are damp or wet, this will cause damage to the charging case. The warranty will be voided if the charging case shows damage by water/sweat.



CAUTIONS

- Avoid extreme heat, cold, and humidity.
- Avoid dropping or crushing the earbuds.
- Wax may build up in the earbud tips, lowering the sound quality. Carefully remove the wax with a cotton swab or other small tool to improve the sound quality.
- If you experience discomfort or pain, try lowering the volume or discontinuing use temporarily.
- If you experience regular discomfort while using this product, discontinue use and consult your physician.
- We recommend you treat your earbuds as you would a nice pair of sunglasses and keep them in safe location when not in use.



[Shop products](#) | [Product alerts](#) | [Burn-in your headphones](#)

JLab Store + Burn-in Tool

